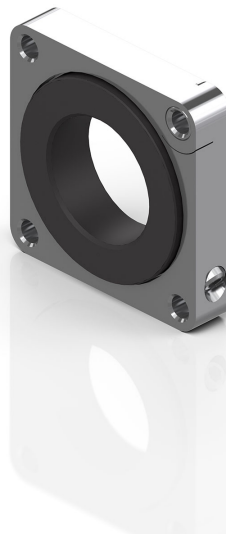


ZS4000-2100 | Metal flange

M23, wall/panel feed-through, straight



Electrical data

Mechanical data

Accessories type	Connectors/Cables
Installation size	M23
Connector type	wall/panel feed-through
Configuration	straight
Body color	metal
Body material	zinc diecast/nickel plated
Seal	FKM

Environmental data

Dimensions

Notes

- Illustrations similar

Ordering information

ZS4000-2100

metal flange for motor cable, itec[®], M23 and feedback cable with itec[®], to adjust the connector, including sealings



Products marked with a crossed-out wheeled bin shall not be discarded with the normal waste stream. The device is considered as waste electrical and electronic equipment. The national regulations for the disposal of waste electrical and electronic equipment must be observed.

Beckhoff[®], TwinCAT[®], TwinCAT/BSD[®], TC/BSD[®], EtherCAT[®], EtherCAT G[®], EtherCAT G10[®], EtherCAT P[®], Safety over EtherCAT[®], TwinSAFE[®], XFC[®], XTS[®] and XPlanar[®] are registered trademarks of and licensed by Beckhoff Automation GmbH. Other designations used in this publication may be trademarks whose use by third parties for their own purposes could violate the rights of the owners.

© Beckhoff Automation GmbH & Co. KG 06/2023

The information provided in this brochure contains merely general descriptions or characteristics of performance which in case of actual application do not always apply as described or which may change as a result of further development of the products. An obligation to provide the respective characteristics shall only exist if expressly agreed in the terms of contract.