

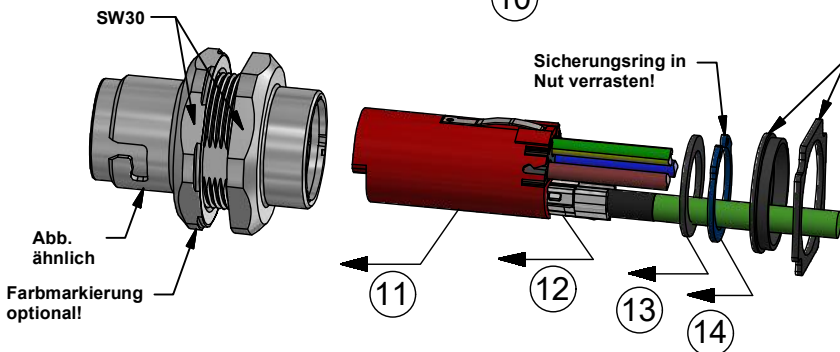
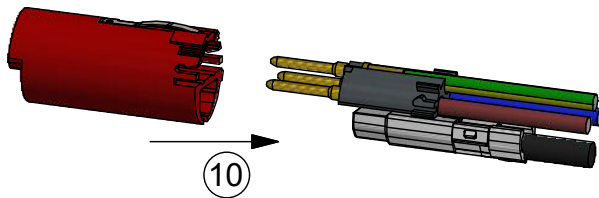
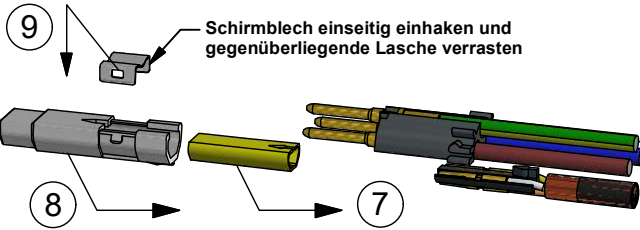
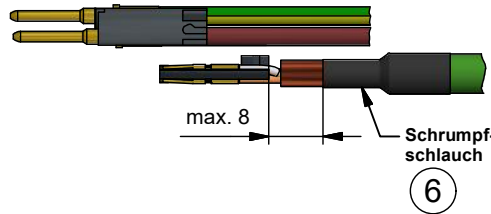
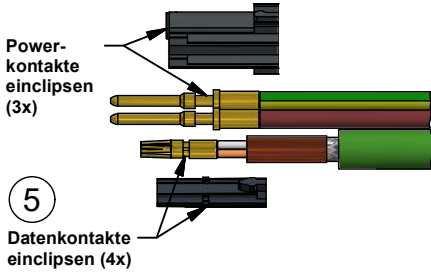
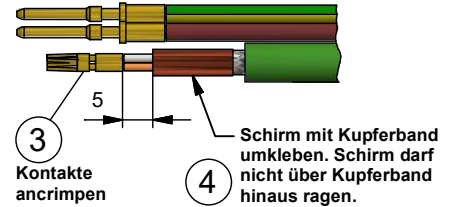
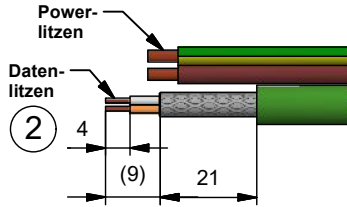
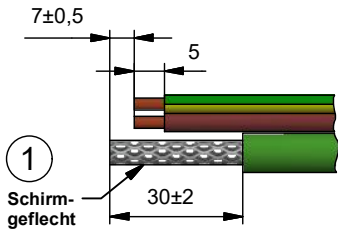
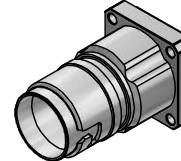
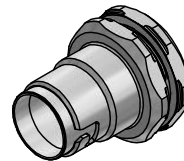
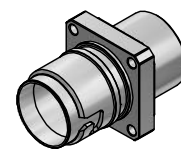
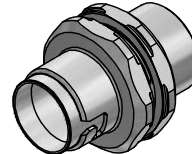
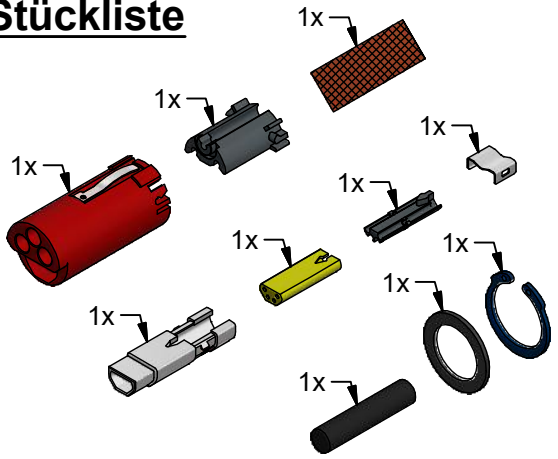


Montageanleitung B17 Hybrid

konfektionierbares Flanschgehäuse mit Crimpanschluss, axial,
3x2,5mm² + 4xAWG22, ENP: Powerstift / Datenbuchse

Stückliste

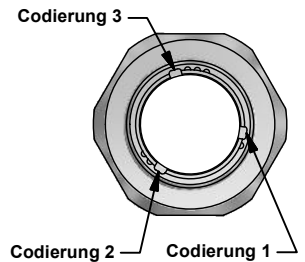
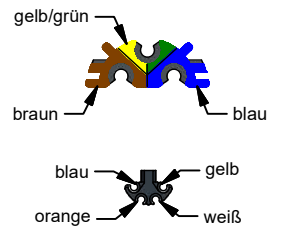
Flanschgehäuse ist von der Produktnummer abhängig!



Laufrichtung beachten!
Achtung: Ansicht von Steckgesicht dargestellt!



Achtung: Ansicht von Kabelausgang dargestellt! Auf richtige Farbwahl achten!



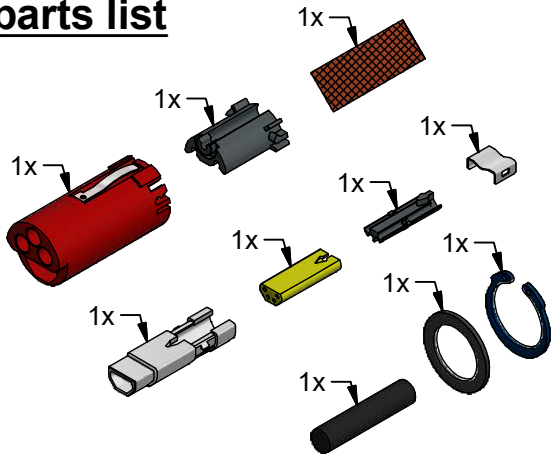
Werkzeug / Zubehör

Crimpzange	Crimpeinsatz / Locator
ZB8810-0000	ZB8810-0001

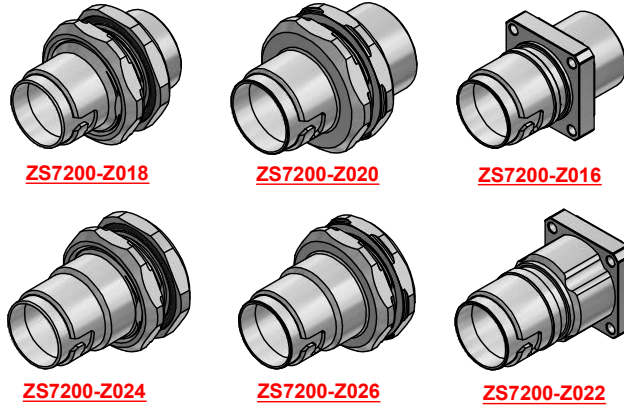
Assembly instruction B17 hybrid

field attachable flange housing with crimp connection, axial,
 3x2.5mm² + 4xAWG22, ENP: power (male) / data (female)

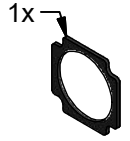
parts list



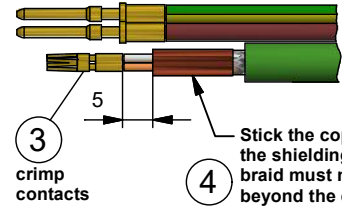
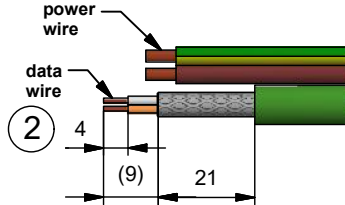
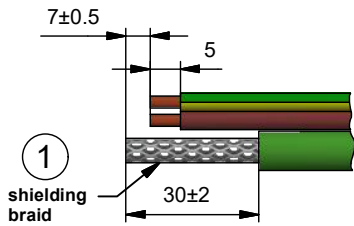
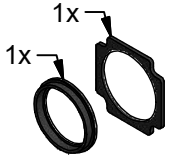
Flange type depends on product number!



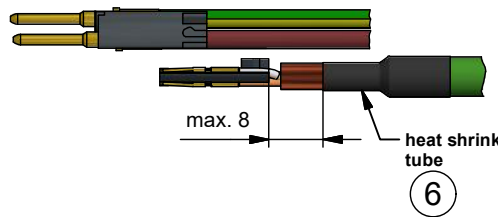
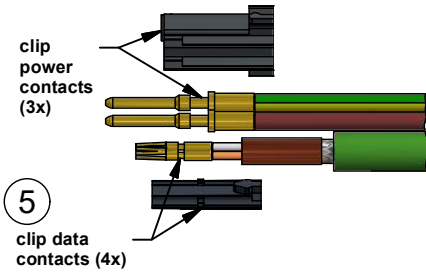
Component only installed in ZS7200-Z016.



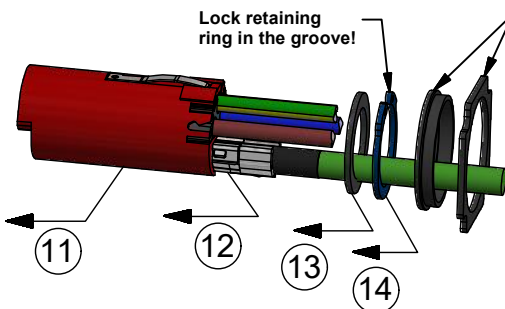
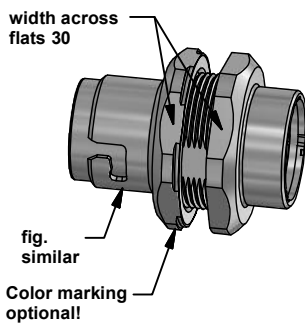
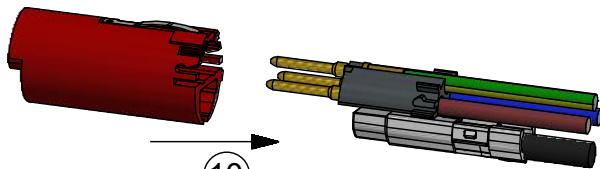
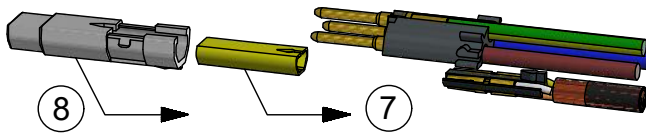
Components only installed in ZS7200-Z022.



Stick the copper band around the shielding braid. Shielding braid must not protrude beyond the copper band.



Push the shield on the first side and snap on the opposing latch.

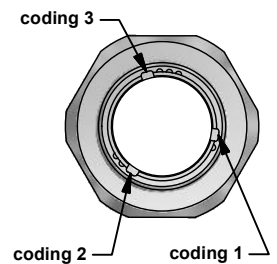
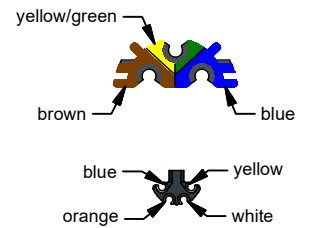


Centering ring is used only in ZS7200-Z022, flat seal is used in ZS7200-Z016 and ZS7200-Z022!

Please consider the cable direction! Attention: View from mating side!



Attention: View from cable outlet! Consider the right choice of colors!



tools / accessory parts

crimping tool	crimping insert / locator
ZB8810-0000	ZB8810-0001