

Quickstart Guide | EN

CU81x0

Uninterruptible Power Supply

1 Quickstart

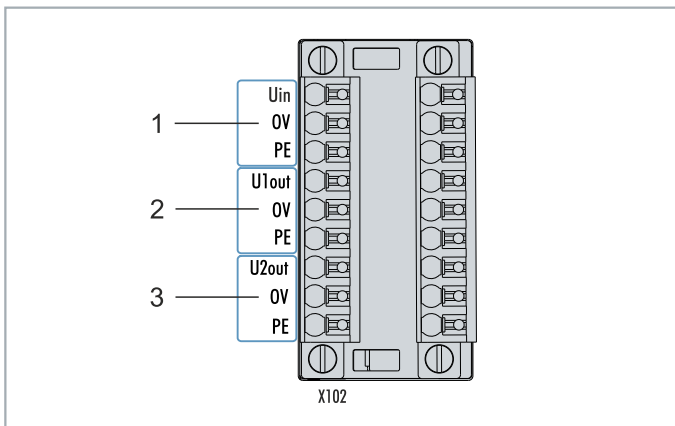
This manual describes the most important steps for commissioning the UPS with USB connection. Detailed documentation is available for download at: www.beckhoff.com

1.1 Connecting the Power Supply

For the power supply of the UPS, an external power supply unit is required, which provides a 24 V DC voltage (-15 % / +20 %). Connect the external power supply unit to the Uin input of the UPS.

Selecting the appropriate power supply unit

Dimension the power supply unit according to the maximum power consumption of the connected devices including the current consumption when charging the UPS.



For the 9-pin connectors, cables with a cross-section of 0.5 mm² to 1.5 mm² or AWG20 to AWG16 are required. With cable end sleeve max. 1 mm² or AWG 17 are permissible.

No.	Pin	Description
1	Uin, 0V, PE	+24 V DC input, power supply for UPS.
2	U1out, 0V, PE	+24 V DC UPS output with UPS-OCT support, interface for the device being supported.
3	U2out, 0V, PE	+24 V DC UPS output, interface for a second device being supported e.g. control panel (display).

1.2 Connecting the Industrial PC

If you sustain an additional device, the interfaces U1out and U2out combined must not exceed the maximum output current of the UPS.

1. Connect the Industrial PC to the U1out output.
2. Connect the Industrial PC to the USB interface of the UPS.

1.3 Installing the UPS Software

NOTE

Older UPS software versions may cause errors during installation, since it may not be possible to update all files. First uninstall the existing UPS software.

The UPS software is compatible with Windows 7 or Windows 10 (32 and 64 bit). Latest installation file available under: <http://ftp.beckhoff.com/download/software/embPC-Control/Tools/CU81x0/>

1.4 Configuring the Software

This step shows how to configure the UPS in the Beckhoff UPS software. Two of the most important settings that affect the behavior of the UPS in the event of a power failure are:

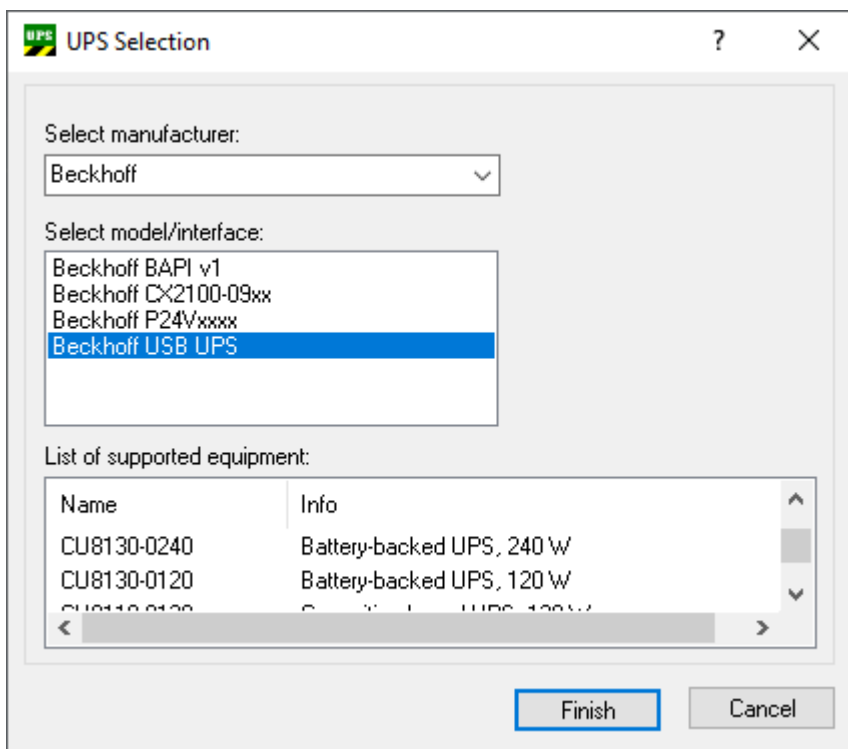
- Max. time on battery before critical alarm
- and Turn UPS off wait time.

In the software, set the time after which the critical alarm should be triggered and the Industrial PC should be shut down in the event of a power failure.

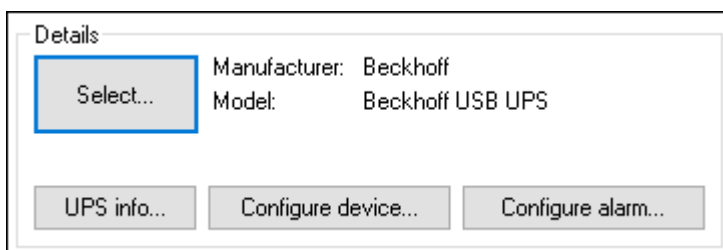
In the next step, define the time after which the ups should switch off its supply outputs. Note that the industrial PC must be shut down properly within this period. Make sure that you do not set a value that is too low and that the set time covers the entire shutdown process.

Proceed as follows:

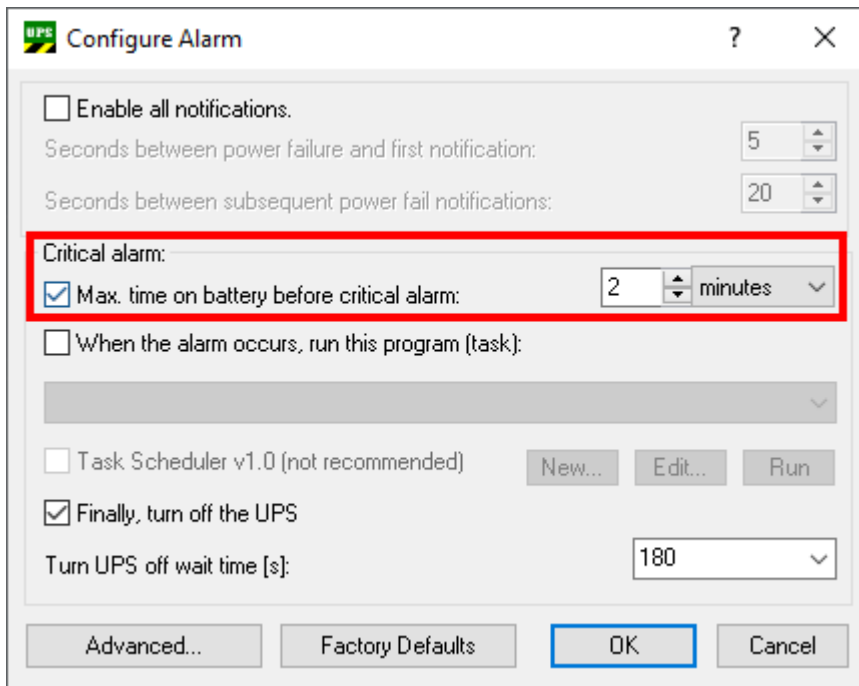
1. Start the UPS software and click **Select**.
2. Select **Beckhoff USB UPS** to configure the communication to the Industrial PC via USB.



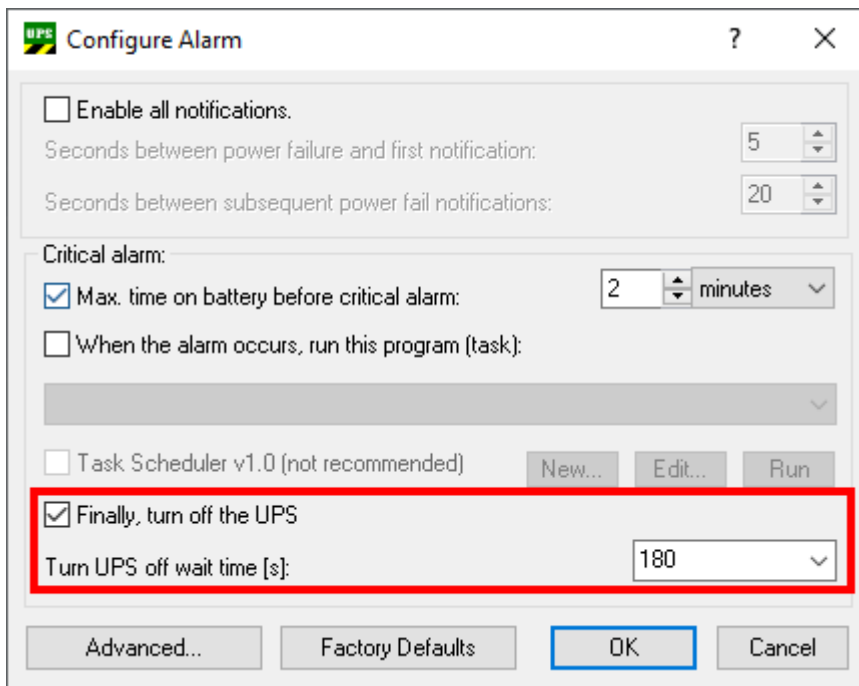
3. Click **Finish** and in the main menu click **Apply** to start the UPS service.
4. The UPS service is running if the manufacturer and the communication type are displayed in the main menu.



- Click on the Configure alarm button and define under **Max. time on battery before critical alarm**, after which the critical alarm should be triggered in the event of a power failure. The critical alarm is not triggered if the power supply returns within the set time.



- Under **Turn UPS off wait time**, determine the time after which the UPS should switch off its outputs. Define a time period in which the industrial PC has sufficient time to shut down properly. Always plan for a sufficient headroom.



The outputs of the UPS are irrevocably switched off after the delay time has elapsed, even if the power supply returns.

- ⇒ In this example, in the event of a power failure, the critical alarm is triggered after two minutes and thereafter the Industrial PC is shutting down. As soon as the critical alarm is triggered, the set countdown of 180 seconds is started. The shutdown of the Industrial PC must be successfully completed within this time (180 seconds), since the outputs of the UPS are switched off directly after the 180 seconds have elapsed.

More Information:
www.beckhoff.de/CU81xx

Beckhoff Automation GmbH & Co. KG
Hülshorstweg 20
33415 Verl
Germany
Phone: +49 5246 9630
info@beckhoff.com
www.beckhoff.com

